



Behavioural Supports Ontario (BSO) Strategy

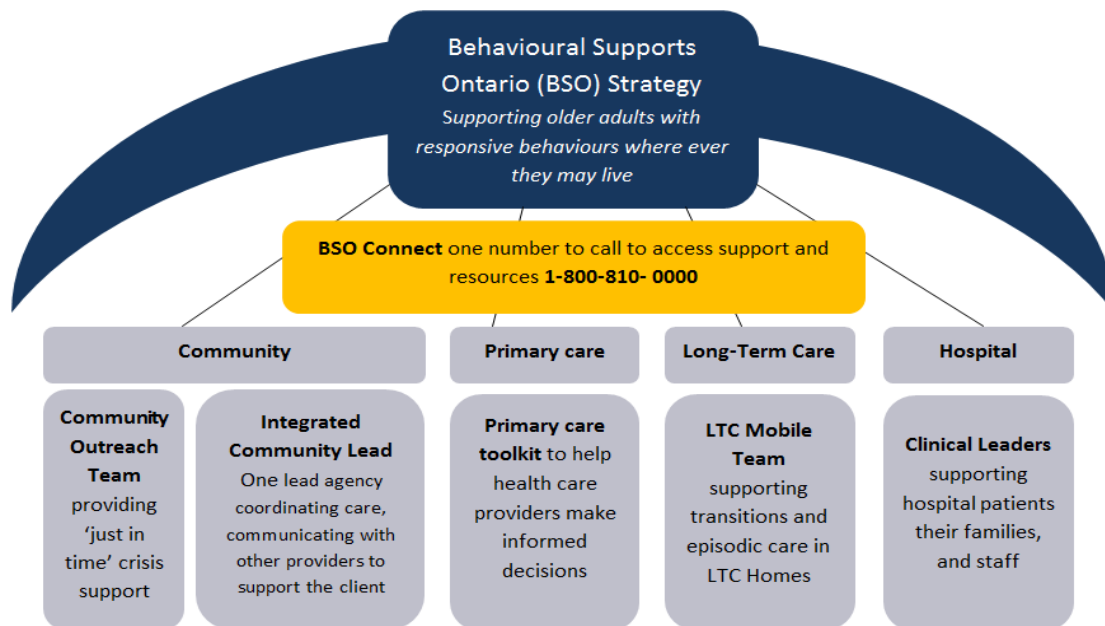
An opportunity to transform the journey for older adults with cognitive impairment presented in 2011 when the Ministry of Health and Long-Term Care committed funding to Local Health Integration Networks (LHIN) to develop, implement, and sustain models of care that better meet the needs of those at risk of, or presenting with, responsive behaviours* as a result of their cognitive impairment.

In spring 2012, HNHB LHIN implemented a strategy to support individuals and their caregivers that follows them across the continuum of care, wherever they may be in their journey. With the person and their caregiver at the center of the strategy, models and approaches to care, based in evidence and best practice, were created and implemented. Concepts of *system redesign*, *integration*, and *building knowledgeable care teams* across the system are integral to the BSO strategy.

Through continuous improvement, the strategy has evolved to where it is today. Multiple organizations, including Alzheimer Society, Hamilton Niagara Haldimand Brant Local Health Integration Network (Home and Community), St. Joseph's Villa Long-term Care, Hamilton Health Sciences, Niagara Health System, St. Joseph's Healthcare Hamilton, and Brant Community Health System employ BSO teams to support clients where ever they may be, and ensure that all care partners understand ***Behaviours Have Meaning***.

* What are Responsive Behaviours?

- It is any behaviour that is in response to a real or perceived stimulus and may result in increased risk for the client or others.
- The behaviour may present a challenge to receiving appropriate interventions or co-existing with others.
- Responsive refers to the fact that many of these behaviours could respond to appropriate and timely interventions, and may be occurring as a result of an unmet need or desire that can no longer be communicated.
- Include pacing, wandering, repetition, verbal outburst, and physical outburst toward oneself or others.



Learn More About Behavioural Supports Ontario in Our Region: [BSO in HNHB LHIN](#) or contact Kathy Peters, BSO Strategic Lead, at peterskath@hpsc.ca